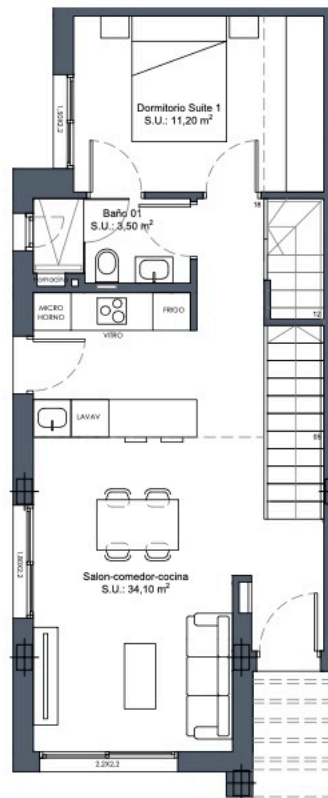
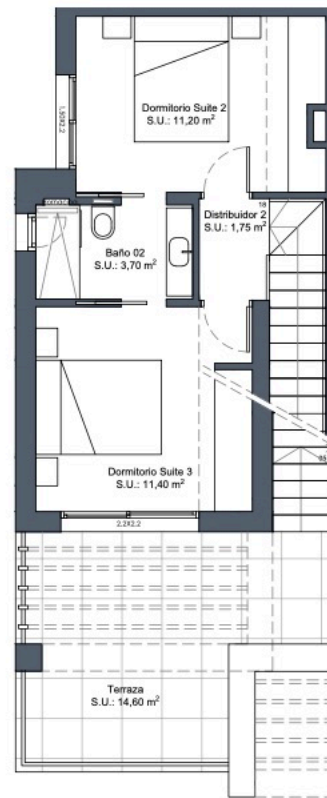


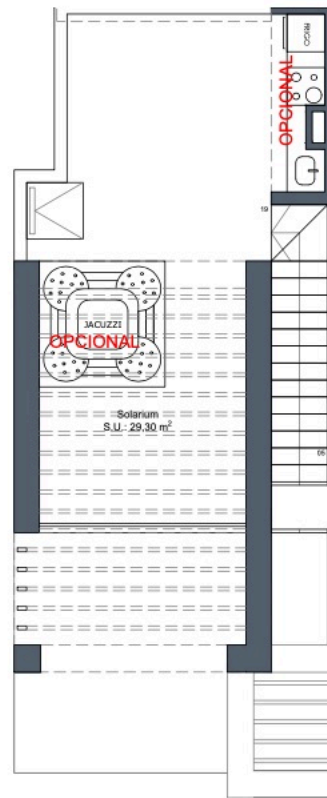
Implantación en parcela



Planta baja



Planta primera



Planta solarium

**Viviendas 02, 04,
06, 08, 10 y 12**
Superficie (m²)

Parcela	167,85
Vivienda	93,30*
Terraza P1	14,60
Solarium	29,30

Total 137,20

Sup. construida*
3 dormitorios
2 baños

